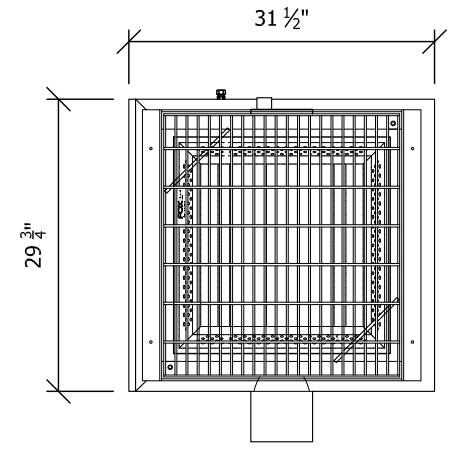
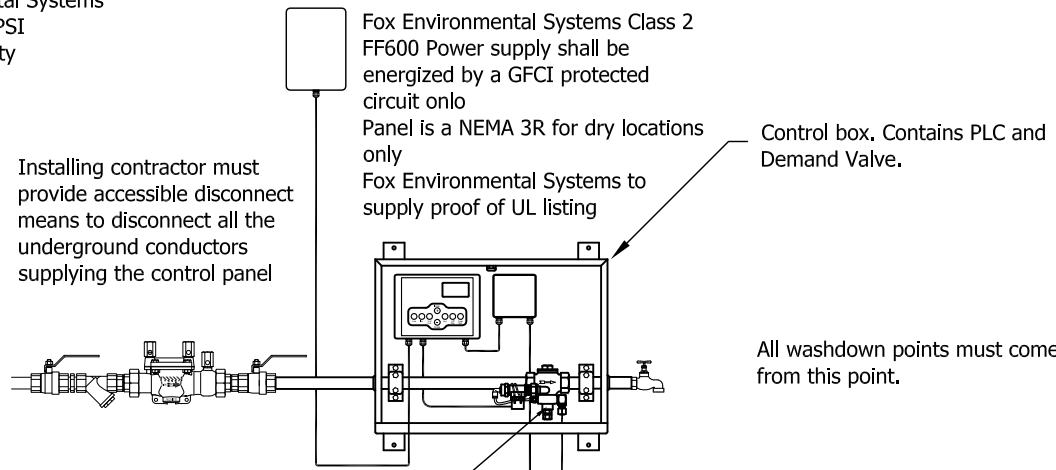


Detail of FF600 System

Model: FF600
Manufacture: Fox Environmental Systems
Max Working Pressure: 170 PSI
Grate Class: Class D Heavy Duty
RPZ: Compliant with ASSE1013




Plan View



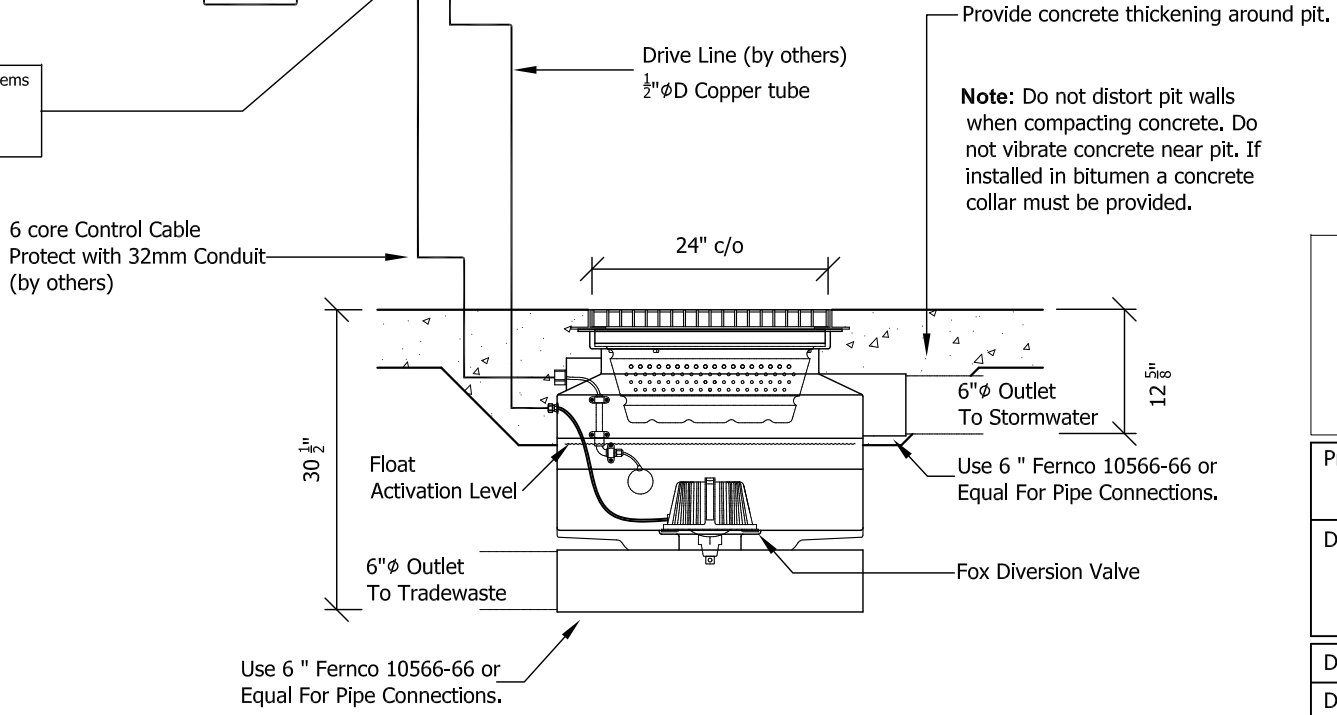
Must be protected by RPZ compliant with ASSE1013

Placement of UPC Shield

Model: FF 600 **Manufacture:** Fox Environmental Systems
Max Working Pressure: 170 PSI
Grate Class: Class D Heavy Duty
RPZ: Compliant with ASSE1013




IAPMO IGC 234 2016
 File Number 10153



Project	IAPMO
Drawing Title	FF600 System

Drawn by:	J.F.S
Date:	25/01/2017
Scale:	As Specified
Drawing No:	A4-SPEC-1007